

# CMG

SOLUTIONS, not just products



## CORPORATE BROCHURE

CORPORATE INFORMATION & PRODUCT SELECTION guide

+ *Specialists in Electric Motors, Geared Motors & AC Drives*

# More than sixty years of growth; building on solid foundations

Sixty years ago, in 1948, there were two significant events that helped to shape the language of their respective markets...

*Columbia Records launched the first 12" Long Play Microgroove record album - LP, for short - in New York, and CMG opened its doors (actually, a garage door) in Melbourne, Australia.*

*One is now a distant memory, having been overshadowed by much newer technology, while the other has grown from strength to strength and is fast becoming a global brand recognised for its four pillars of excellence: Quality, Integrity, Dependability, and Performance.*

*Admittedly, vinyl records found their way into every corner of the world, whereas CMG can claim more modest gains. But when it comes to longevity, few companies in the markets that we serve enjoy a similar history. CMG has stood the test of time in markets that have been unforgiving for lesser companies. We have helped to create benchmarks for excellence that competitors must aim for if they want to survive commercially.*

*The name CMG is as solid as the business principles that underpin its existence.*

*Wherever there is movement CMG can provide the product, including electric motors, geared motors, variable frequency drives, soft starters and many other associated products. We service industries as diverse as mining, petrochemical, automation, materials handling, fluid handling, air movement, agriculture and original equipment manufacturing.*

*Our major customers include international giants like KSB, Davey, Mono Pumps, Carter Holt Harvey and BHP Billiton. The fact that we are the chosen supplier to some of the most demanding industrial markets is testimony to our world competitive quality standards.*

*The key to our success is to value add products through strategic partnerships with leading international companies. Each party brings their respective technical skills to the table, and through this co-operative approach we tailor solutions for our clients rather than just supply them with product.*

*World best practices and technologies, together with our international computerised sales, spare parts and service back-up guarantees a total commitment to every customer. After 60 years we have shown that whatever the product, or indeed the application, our customers can rely on it to perform to specification. Our products deliver reliable performance year after year with minimum maintenance and downtime.*

## LOCATIONS

CMG boasts a long established network around Australia and New Zealand, with a steady expansion internationally in the Asia Pacific region, China, the United Kingdom, the Middle East, and South Africa. Our operations, combined with a carefully selected network of distributors, provide confidence that we have the right product when and where required.

## OPERATIONS

Every customer has unique needs and our business model has evolved to ensure that we can tailor products to suit those needs. Our multi-million dollar state-of-the-art manufacturing facility in Melbourne reflects our continuing commitment to the very latest manufacturing processes. Manufacturing facilities in China and Thailand expand our production capabilities and enable us to meet large volume orders. ISO 9001 accreditation means our product quality is assured.

CMG's Modifications Division is known for excellence in terms of alterations to standard motors. Customer specified enhancements include major or minor changes to shafts, coatings, mounting, IP rating and other features.

If our clients need design and support of complex motor control equipment, our Drives Technical Support offers customised enclosures, custom application software, repairs and commissioning for every application and industry.

We also provide a complete Gearbox Assembly Service. Based in both Australia and New Zealand, it offers specialised build and repair services for our vast range of gearboxes, including custom specific requirements. This is part of our total customer care philosophy by adding value to the products we sell.

## TESTING

CMG Technology is a recognised R&D leader. Our NATA and ILAC accredited laboratory offers complete design and testing services for CMG and external customers. Our experienced team performs in-house testing with detailed reporting. Using state of the art digital power analyser equipment, CMG technicians can load test motors and drives up to 250kW. Extensive laboratory projects cover areas of improved energy efficiency, standard load testing, and hazardous area motor testing.



## PROJECTS

Whenever a need arises for the supply of motors, drives, or gearboxes to large scale mining, petrochemical and utilities industries, companies and consultants alike can rely on CMG's Projects Division.

This specialist team looks after tendering, contract administration, supply, sales, and servicing to our global markets. We ensure that all the important details are taken care of so our clients can be confident that timelines for the overall project and the specifications laid down by their engineers are met.

Our ISO 9001 accredited Project Management team is experienced in all commercial and technical aspects of mine site requirements. This ensures that clients receive an efficient response to their specific needs and timely delivery to their project. From the initial design concept through to technical evaluation of specifications and supply, our project team works in close and continuing cooperation with our clients.

Supported by CMG's Engineering Department, including motor design electrical engineers, mechanical engineers and electronic experts, the project team is able to provide detailed engineering analysis no matter how difficult or complex the application.

## THE FUTURE

Preparing for the future is as much about recognizing how we reached a position of leadership, as it is about looking forward.

Today we are in the enviable position of offering almost the entire life-cycle of our Australian-manufactured products to our clients. In other words, for every electric motor we make in Rowville, on average 90% comes from our group companies.

This degree of self-sufficiency has been a carefully planned and implemented strategy. With most of our competitors either closing their doors or sourcing their products off-shore, the CMG 'model' has become the preferred arrangement for a growing number of clients.

When we speak about quality, integrity, dependability and performance, we can say with absolute certainty that "the buck stops with us".

---

## CMG ENGINEERING GROUP

*CMG Engineering Group includes CMG, Sankey Australia, Transmission Australia, Torin and OBA. CMG Engineering Group is a powerful team offering engineered 'total solutions'. Sankey operations can now meet customer needs for metal stamping, expanded metal products, aluminium die-casting, and precision machining. Transmission Australia, incorporating Powergrip, provides the components*

*that link together power transmission systems. This includes a broad range of products such as gear motors, actuators, DC & servo systems, conveyor systems, brakes and couplings, materials handling, machine measurement, and gate operating systems. OBA supplies electrical engineering materials including wire, cable, and insulating materials.*



## WORLD CLASS electric motor range



### HLA & SLA

Three phase, enhanced performance cast aluminium motors, featuring a multi-mount arrangement incorporating bolt on feet or pad mount configuration. 2, 4, 6 and 8 pole, 0.09 to 18.5kW. Ideal for the OEM market.

- » Light weight
- » Top mounted terminal box standard (rotatable)
- » Ideal for alloy gear boxes
- » B3, B5, B14A, multi and pad mounting
- » Multi speed available
- » HLA is NEW MEPS2 compliant (Eff1)
- » SLA is MEPS (2002) compliant (Eff2)



### HGA & SGA

Enhanced performance cast iron motors. These three phase squirrel cage motors offer low temperature rise through conservative design. 2, 4, 6, 8 and 10 pole, IP55, 0.37 to 315kW, frames 71 to 355.

- » 2 year warranty
- » Robust construction
- » Generous service factors
- » Hazardous location versions: Ex e, Ex nA, Ex tD (formerly DIP)
- » Smokespill applications
- » Multi speed
- » Mining specification versions available
- » Left hand or top mount terminal box versions also available
- » HGA is MEPS2 compliant (Eff1)
- » SGA is MEPS (2002) compliant (Eff2)



### PPA(C) & XPA

A premium, mining specification motor of cast iron construction. IP66, three phase, 0.37 to 1000 kW, frames 80 to 450, 2, 4, 6, and 8 pole. Australian (PPA) and CENELEC (PPC) kW/frame allocations.

- » Class H insulation
- » Thru flush grease relief valves
- » Low noise
- » 20 year design life
- » AS/NZS 1359 (IEC 60034 & 60072) dimensions
- » XPA is MEPS2 "High Efficiency" (exceeds Eff1 and meets new draft international standard, highest level, IE3 - premium efficiency)
- » PPA is MEPS2 compliant (Eff1)



### PPD

Specifically designed for hazardous locations, this motor features cast iron construction. IP66, three phase 0.55 to 90kW, 2, 4, 6 and 8 pole. Ex d, Zone 1, Group I & IIB, T4 temperature class.

- » Class F insulation
- » Top mounted terminal box
- » Low noise
- » Meets IEC standards
- » Foot or flange mounting
- » Up to 1100 volts
- » Complies with AS3947-2

## CW - AUSTRALIAN MADE



Light industrial motors, single and three phase, with rolled steel body construction, available in B56 frames and IEC mountings. Customer specific versions available offering special electrical and mechanical requirements, various speed options including speedmaster, 0.12 to 2.4kW continuous rating, and up to 4kW short term.

- » Australian made
- » Robust designs
- » Full service and parts available
- » Multi and variable speed options
- » Various mounting arrangements
- » Non-standard voltages and frequencies
- » Special shaft designs, painting and materials available

## CT



The CT series includes the CT52 Fridgemaster, CT72, CT75 & CT83 Pool & Spa, CT76&82 General Purpose, and CT85&90 Air Movement motor ranges, all of which can be designed and built to customer requirements.

- » CT52: 10 to 60W, efficient PSC design, reversible, totally enclosed, universal mounting
- » CT72,75&83: 370 to 2200W, certified AS/NZS60335, NEMA & B56 flange options, stainless steel shaft
- » CT76&82: 180 to 370W, light industrial applications
- » CT85&90: 40 to 1100W, single & double shaft, low noise long life bearings, CE Certified, various mounting arrangements
- » Accessories and spares available

## MT



Single and three phase, cast aluminium motors. 0.09kW to 2.2kW PSC and up to 3.7kW in CS/CR

The MT series features a multi-mount arrangement incorporating bolt-on feet or pad mount configuration.

- » Light weight
- » Single and three phase
- » B3, B5, B14, multi mount
- » Ideal general purpose motor
- » Top mounted terminal box standard (rotatable)

## CENTURION HTE, HCA, HCW



European designed medium voltage SCR cast iron and fabricated steel frame motors available up to 11,000V. Standard features include low vibration, epoxy paint, Class F insulation, IP55, Winding/Bearing RTD's as well as anti-condensation heaters.

- » 2 Year warranty
- » Designs suitable for VVVF
- » Wound rotor also available
- » TEFC up to 1500kW
- » CACA up to 4500kW
- » CACW up to 13000kW
- » Engineered designs to meet customer specifications

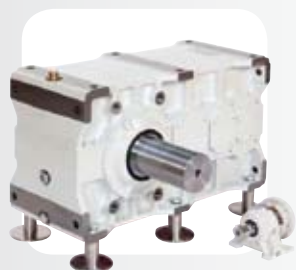
## WORLD CLASS gear box range



### REGGIANA RIDUTORRI PLANETARY REDUCTION GEARS

Reggiana Ridutorri Planetary Reduction Gears cover a wide range of ratios and torques. A leader in its field RR uses the most advanced technologies in design and production. The modular design allows for a wide variety of applications across a multitude of industries.

- » Linear and Angular units torque up to 560,000Nm
- » New RR Plus series
- » Cylindrical, Hollow and Splined shafts
- » Hydraulic, Electric and Mechanical Inputs
- » Positive, Negative and Output shaft brakes
- » Ratios from 3 to > 33,000 : 1



### ALLIANCE HELICAL AND BEVEL HELICAL INDUSTRIAL GEARBOXES

These gear units are suitable for most applications in both horizontal and vertical drives.

- » Torque up to 670,000Nm
- » Nominal Power Ratings up to 1.2 Megawatt
- » Easily combined with planetary reduction units
- » Horizontal and Vertical Drives
- » Solid, Hollow and Shrink Disc shafts
- » Cast Iron and Fabricated steel cases
- » Helical units up to 99% efficiency
- » New gear grinding technologies provide low noise levels



### CMG SMR & CYCLOID 600

SMR® - helical shaft mounted reducers, 0.29 to 134kW, up to 7449Nm  
Cycloid 600 - compact high efficiency cycloidal speed reducers, 0.37 to 22kW, up to 3890Nm

Features of the SMR:

- » Sizes B to J
- » Torque to 7449Nm
- » New keyless drive system

Features of the Cycloid 600:

- » 0.37 to 22kW
- » Compact drives
- » Vibration free
- » Up to 500% overload protection
- » Torque up to 3890Nm



### CMG CRT WORMBOX

CRT - universal mounting aluminium worm geared motor units ranging up to 350Nm, 0.09 to 2.2kW

- » Cost Effective
- » Sizes 40 - 90 frame
- » 0.09 - 2.2kW
- » 7.5 - 100:1 ratios
- » Standard IEC motor
- » Multimount accessories
- » Interchangeable with various European brands



## VARVEL FRD

Inline geared motor units ranging up to 2300Nm, 0.18 to 22.0kW aluminium up to size 4 /cast iron sizes 5+6

- » Foot and flange mount available
- » Adaptable mounting positions
- » Standard IEC motor input
- » Dry face input
- » All alloy construction
- » European footprint



## VARVEL FRS & FRT

FRS - worm geared motor units ranging up to 1500Nm, 0.09 to 15kW.  
FRT - universal mounting aluminium worm geared motor units ranging up to 400Nm, 0.09 to 4.0kW.

- » Hollow shaft design
- » Standard IEC motor inputs
- » Interchangeable and adaptable mounting
- » Solid shafts available
- » Dry face input
- » Reducers, flanges and torque arms available



## NORDBLOC & NORDUNICASE

Inline helical geared motor units ranging up to 8264Nm, 4 to 45kW.  
Inline flat helical geared motor units up to 6715Nm, 1.1 to 45kW from stock.

- » Premium quality heavy duty design
- » Foot and flange mounting types
- » Nordbloc units interchangeable with other brands
- » One piece housings (unicase)
- » Flat helical hollow shaft units
- » IEC adaptors available



## NORDBEVEL

Right angle helical bevel geared motor units ranging up to 9550Nm, 0.37 to 45kW from stock.

- » Premium quality heavy duty design
- » Foot, flange, solid and hollow shaft types
- » One piece cast iron housing (unicase)
- » IEC adaptors available
- » Backstops on bevel sets available
- » Low running noise and long maintenance intervals



## CMG GEARDRIVE

Sub-fractional power units ranging up to 34Nm, 52 to 96W, 240V.  
Speeds from 1 to 168r/min.

- » Australian made
- » Compact design
- » Dual motors for high torque or reverse rotation
- » BBQ type units available
- » Motor only version 2800r/min
- » Brake for stopping within 1 revolution of rotor shaft



## CMG C&H - AUSTRALIAN MADE

Inline geared motor units ranging up to 175Nm.  
Speeds from 0.016 to 630r/min, 0.37kW.

- » Australian made
- » Compact design
- » Foot and flange mount available
- » Wide speed range
- » Mechanical variators

## WORLD CLASS drives range

### VACON NXL LIGHT & NXS STANDARD



General purpose drives 240V to 690V, up to 560kW.  
Simple to use, reliable and flexible, in compact dimensions.  
Common interface across each range.

- » Automatic motor ID tuning
- » Start up wizard
- » Modular design
- » PID control incl. pump applications
- » Expandable I/O options and fieldbus cards
- » Integrated AC Choke and RFI filter
- » Extensive motor protection
- » Low noise
- » 50°C ambient available
- » Cooling channel separated from electronics

### VACON NXP PERFORMANCE



Performance drives 240V to 690V, up to 2000kW.  
Designed for applications where robustness, dynamic performance, precision, and power are required.

- » Open or closed-loop vector control
- » Speed error <0.01%
- » Fast drive-to-drive communications for positioning, load sharing and synchronising capabilities
- » Induction and permanent magnet motors supported
- » 6 pulse, 12 pulse and Active Front End regenerative solutions
- » Incremental and absolute encoder supported

### VACON NXC CABINET



Engineered cabinet solutions up to 2MW air cooled and 5MW liquid cooled. A space saving and well tested design which fully utilises the flexibility of the NXP drive.

- » Extensive factory options include fast acting fuses, main switch, contactor, control options and filters.
- » Easily accessible control unit
- » Good thermal handling for long lifetime and trouble free operation
- » IP21 and IP54 solutions
- » Approved EMC solutions and integrated AC Chokes
- » Output filters incl. dU/dt and Sine filters
- » Door control options, top entry modules

### VACON NXW WATER



High power liquid cooled drives 415V to 690V, up to 5000kW.  
The most space saving AC drive available. Well suited for locations where cooling requirements and space are a premium.

- » High tech specially designed cooling element
- » 12 pulse, 18 pulse and Regenerative drives available
- » Direct heat losses to the most convenient location
- » Heat exchange unit available
- » Save on air conditioning installation and running costs
- » Full NXP control performance capabilities
- » Fully sealed installations possible



## NORD TRIO

Integral motor mounted inverter IP66 up to 4kW.

The NORD Trio is an inverter directly mounted on a CMG motor, complete with full control and parameterisation functionality.

- » Simple parameter setting with keypad or PC software
- » Thermistor input standard
- » Integrated brake chopper and relay
- » PID controller
- » Optional potentiometer box with 3-position switch
- » 2 parameter sets
- » Fieldbus modules available



## LOVATO ADX SOFT STARTERS

Torque control soft starters 415V to 690V, up to 630kW.

Reduced voltage soft starter with torque control. Provides the best control and protection for a three phase motor.

- » Integral by-pass contactor up to 132kW
- » Torque control acceleration
- » Current limit acceleration
- » Onboard Modbus
- » Thermistor input standard
- » Real time clock and events log
- » Extensive motor protections
- » English text screen display



## LOVATO MICRO

Micro soft starters 415V, up to 22kW.

Controlled acceleration and deceleration, guaranteeing less stress on equipment.

- » Easy installation and set up
- » Integrated by-pass contactor
- » DIN rail mounting
- » Thermistor input on larger frame models
- » High ambient temperature rating
- » LED status indicators
- » High number of starts per hour



## BALDOR VS1ST

Single Phase Input Voltage 240V up to 2.2kW.

Combining performance with an intuitive operator interface, the VS1ST can handle the most demanding applications.

- » IP20 Enclosure
- » DIN rail mounting
- » Enhanced V/Hz Control
- » User friendly control
- » PI control
- » Modbus - RTU Standard (built-in)



## SOLUTIONS, NOT JUST PRODUCTS

We specialise in an extensive range of electric motors, geared motors and AC drives. Offering a “complete package” ensures our customers get the most efficient, cost effective solution possible.

» *Our success is built on a strong commitment to our customers’ needs and a willingness to find the best solution possible. We have been in*

*business since 1948 so you can be confident our expertise and experience is second to none.*



## GLOBAL PRESENCE - GLOBAL PARTNERSHIPS

With over 500 staff around the globe, our branches extend across Australia, New Zealand, Asia Pacific, South Africa, China, Europe and the Middle East.

» *We also have the capability to value-add our products through partnerships with leading international companies whose technical skills are equal to ours, including Gear Motors from NORD and*

*AC Drives from VACON. In return we offer these companies superior technical support that complements their own R&D capabilities.*

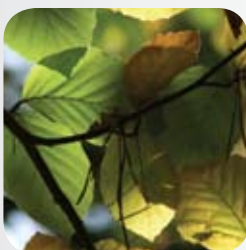


## ENGINEERING STAFF, FACILITIES & QUALITY ASSURANCE

CMG staff have a wealth of experience in the engineering industry, and they are here to help solve any engineering challenge and to provide customers with the right product solutions

» *Proven research capabilities in the areas of improved energy efficiency, standard load testing or hazardous location testing*  
» *Facilities for design, testing, product development and quality control*

» *Quality is at the core of everything we do here at CMG. In 2004 we achieved ISO 9001 accreditation which means our product quality is assured.*



## ENERGY EFFICIENT - ENVIRONMENT FRIENDLY

At CMG we’re committed to increasing energy efficiency and decreasing greenhouse gas emissions.

» *Our HLA aluminium and HGA cast iron range of motors exceed new MEPS2 minimum efficiency standards in line with Eff1 and correspond to IE2 high efficiency levels of IEC 60034-30, and compliment our popular energy-efficient PPA motor.*

» *Couple this with one of our VACON drives and you could save up to 60% of your energy bill depending on your application*  
» *NEW... XPA is MEPS2 “High Efficiency” (exceeds Eff1 and correspond to IE3 premium efficiency levels).*



## PERFORMANCE TESTING

Our NATA accredited laboratory offers complete design and testing services. Through the ilac-MRA agreement our test reports are recognised worldwide. We have high efficiency, enhanced performance and high specification motors popular in the mining industry. Our hazardous location motors are AUS Ex, IEC Ex, and ATEX approved.

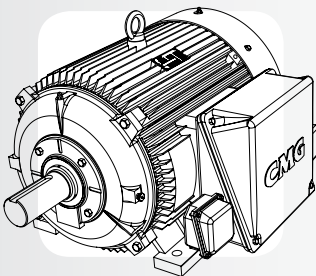
» *With state of the art equipment, our experienced team conduct projects covering areas of improved energy efficiency, standard load testing, and hazardous area motor testing.*



## LLOYD'S REGISTER TYPE APPROVAL

For those CMG products used in marine and offshore applications, a Lloyd's Register Type Approval mark has been awarded. This approval mark encompasses the range of motors below:

- » PPA/PPC
- » HGA/HLA
- » PPD
- » SGA/SLA



## PRODUCT DESIGN & DEVELOPMENT

Incorporating the latest 2D and 3D design software programs from Australia and overseas, our staff have had extensive experience in the design and development of electric motors.

- » *Substantial productivity and energy efficiency gains have been achieved for customers through the product design and development work done by CMG's engineering team.*



## AFTER SALES SERVICE, FACILITIES, REPAIR & COMMISSIONING

After sales service and technical support for continuous operation. Phone 1800 676 722 (Australia) or 0800 676 722 (New Zealand). With distribution world wide, we maintain local stock and spare parts at many of our branches. We also offer customers a full local repair facility, with an experienced after sales service team available 24/7.

- » *24 hour technical support in Australia and New Zealand*
- » *Onsite service and commissioning*
- » *Substantial stock holdings of product and parts*
- » *Comprehensive spares holdings*
- » *Service centres in major cities and regional areas*
- » *Free telephone technical support*

## HEAD OFFICE

19 Corporate Ave / PO Box 2340  
Rowville VIC 3178 AUSTRALIA  
info@cmggroup.com.au  
Tel: +61 (0)3 9237 4000  
Fax: +61 (0)3 9237 4010

### AUSTRALIA

Sales : 1300 888 853  
Support : 1800 676 722  
www.cmggroup.com.au

CMG Pty Ltd  
ABN 99 005 118 114

#### VICTORIA

19 Corporate Ave  
Rowville VIC 3178  
Tel: +61 (0)3 9237 4040  
Fax: +61 (0)3 9237 4050

#### NEW SOUTH WALES

8/26 Powers Road  
Seven Hills NSW 2147  
Tel: +61 (0)2 9674 1555  
Fax: +61 (0)2 9674 4652

#### NORTH NEW SOUTH WALES

13B Old Punt Road  
Tomago NSW 2322  
Tel: +61 (0)2 4964 9144  
Fax: +61 (0)2 4964 8537

#### QUEENSLAND

1/6-8 Radium Street  
Crestmead QLD 4132  
Tel: +61 (0)7 3803 2033  
Fax: +61 (0)7 3803 2683

#### NORTH QUEENSLAND

Cnr. John Vella Drive & Connors Rd  
Paget, Mackay QLD 4740  
Tel: +61 (0)7 4952 6244  
Fax: +61 (0)7 4952 6277

#### WESTERN AUSTRALIA

21 Colin Jamieson Drive  
Welshpool WA 6106  
Tel: +61 (0)8 6253 3700  
Fax: +61 (0)8 6253 3710

#### SOUTH AUSTRALIA

2/24 Richard Street  
Hindmarsh SA 5007  
Tel: +61 (0)8 8340 8333  
Fax: +61 (0)8 8340 8800

#### TASMANIA

112 Tarleton Street  
East Devonport TAS 7310  
Tel: +61 (0)3 6427 9911  
Fax: +61 (0)3 6427 9922

## ASIA PACIFIC

www.cmggroup.com.sg

### SINGAPORE

CMG Electric Motors (Asia Pacific) Pte Ltd  
Registration No. 200414611G  
69 Tech Park Crescent  
Singapore 638073  
Tel: +65 6863 3473  
Fax: +65 6863 3476

### MALAYSIA

CMG Electric Motors (Malaysia) Sdn. Bhd  
Registration No. 796093-K  
6536A Jalan Bukit Kemuning,  
Batu 6, Seksyen 34  
40470 Shah Alam, Malaysia  
Tel: +603 5124 9217  
Fax: +603 5124 6195  
www.cmggroup.com.my

## CHINA

www.cmggroup.com.cn

### SHANGHAI

CMG Electric Motors Trading (Shanghai) Co Ltd  
Registration No. 040714

Room 504, Building 28  
200 Shuang Liao Road  
Shanghai, China  
Tel: +86 (0)21 3377 6268

## EUROPE

www.cmggroup.co.uk

### UNITED KINGDOM

CMG Electric Motors (UK) Ltd  
Registration No. 0459 5019  
Unit A Stafford Park 2, Telford  
Shropshire TF3 3AR UK  
Tel: +44 (0)1952 299 606  
Fax: +44 (0)1952 299 667

## MIDDLE EAST

www.cmggroup.co.il

### ISRAEL

CMG Electric Motors (Israel) Ltd  
Company No. 513713107  
9 Bareket St, Zone 23  
North Industrial Park  
Caesarea 38900  
Tel: +972 (0)4 627 0777  
Fax: +972 (0)4 627 0779

## NEW ZEALAND

Sales : 0800 676 722  
www.cmggroup.co.nz

CMG Electric Motors (NZ) Ltd  
NZCN : 567 351

### AUCKLAND

315A Rosebank Road  
Rosebank, Avondale, Auckland  
Tel: +64 (0)9 820 3550  
Fax: +64 (0)9 820 8504

### CHRISTCHURCH

Cnr Lunns & Annex Road  
Middleton, Christchurch  
Tel: +64 (0)3 348 3740  
Fax: +64 (0)3 348 3760

### ROTORUA

51 Pururu Street, Rotorua  
Tel: +64 (0)7 347 8624  
Fax: +64 (0)7 347 8629

### CAMBRIDGE

13 Carters Crescent, Cambridge  
Tel: +64 (0)7 827 4986  
Fax: +64 (0)7 827 4819

## SOUTH AFRICA

www.cmggroup.co.za

CMG Electric Motors South Africa (Pty) Ltd  
Registration No. 2003/001379/07

### JOHANNESBURG

268B Fleming Road  
Meadowdale, Germiston  
Johannesburg 1614  
Tel: +27 (0)11 453 1930  
Fax: +27 (0)11 453 9560

### DURBAN

Unit 13 Heron Park  
80 Corobrik Road  
Riverhorse Valley Estate  
Durban 4017  
Tel: +27 (0)31 569 5551  
Fax: +27 (0)31 569 5549

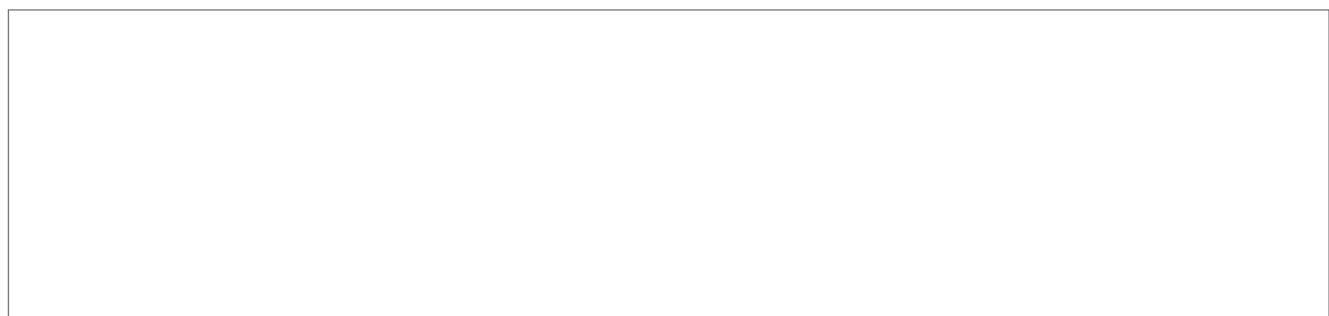
### MIDDELBURG

Unit 6, 2 Rand Street  
Industrial Area  
Middelburg 1050  
Tel: +27 (0)13 246 1902  
Fax: +27 (0)13 246 1205

### CAPE TOWN

Unit 3, 52 Junction Street  
Tygerberg Industrial Park  
Parow Industria  
Cape Town 7499  
Tel: +27 (0)21 951 2901  
Fax: +27 (0)21 951 2910

CMG PRODUCTS ARE SOLD AND RECOMMENDED BY :



All CMG products are regularly redesigned and improved and CMG reserves the right to change the design, technical specification and dimensions without prior notice. E&OE.