



“Solutions, not just products.”

Specialists in Electric Motors, Geared Motors & AC Drives

At CMG we offer customised packages to the most demanding industrial markets. Our success is built on a strong commitment to our customers’ needs and a willingness to find the best solution possible. We have been in business since 1948 so you can be confident our expertise and experience is second to none.

With over 500 staff around the globe, our branches extend across Australia, New Zealand, Asia Pacific, South Africa, Europe and the Middle East.

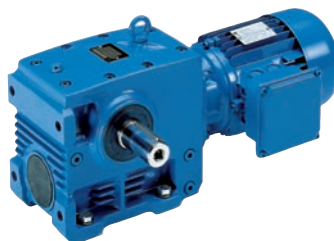
We have the capability to value-add our products through partnerships with leading international companies whose technical skills are equal to ours, including Gear Motors from NORD and AC Drives from VACON. In return we offer these companies superior technical support that complements their own R&D capabilities.

Our manufacturing facility in Melbourne, Australia, demonstrates our commitment to efficient automated manufacturing processes. This facility includes a NATA accredited laboratory which offers complete design and testing services.

“We specialise in an extensive range of Electric Motors, Geared Motors and AC Drives. Offering a “complete package” ensures our customers get the most efficient, cost effective solution possible.”



➤ Electric Motors



➤ Geared Motors



➤ AC Drives

HLA cast aluminium multi-mount three phase motors

Sizes 80 to 160, 0.75 to 18.5kW

Motor design

CMG's HLA series motors are an ideal example of CMG's enhanced performance motors.

Building on the proven performance of the popular SLA series, CMG has developed the HLA series to meet the demands of more efficient electric motors. Incorporating all of the mechanical features of the SLA series the HLA series complies with the new Australian standard for minimum efficiency (MEPS2).

Standards and specifications

The main dimensions and rated outputs of the HLA series generally conform to Australian Standard AS1359 and International Standards IEC 60034 and IEC 60072.

Multi-mount feature

The standard HLA motor is supplied with the terminal box top mounted, and has detachable feet. The unique multi-mount design allows the motor feet to be removed and the motor mounted from any of the 16 mounting pads. This feature means that for axial flow fans, there is no need for a motor mount in the fan case, which enables quicker assembly times, lower cost, and less restriction to air flow.

Alternatively the feet may be relocated to either side, for a wall mounted motor or side mounted terminal box.

Operating parameters

Standard HLA series motors are designed with the following parameters:

- Continuous duty (S1)
- Three phase 380-415V, 50Hz power supply
- Ambient temperatures up to 40°C
- Installation at altitudes up to 1000 metres

Performance data is based on these parameters and may need adjustment for different requirements.

F class insulation, B class temperature rise

HLA series motors have F class insulation and B class temperature rise which gives them good service factor capabilities.

Degree of protection

Standard level of enclosure protection for the HLA series is IP55, with increased ratings available on request.

Pump application

A locked drive end bearing is standard on all HLA flange mounted motors from 90 to 160 frame. This makes it perfect for pump applications where minimal axial shaft movement is critical to provide tight tolerances for impellers. On request CMG can provide a locked bearing option for smaller frame sizes and foot mounted motors.

Air movement application

Low weight design and the standard drilled and tapped hole in the shaft makes the HLA series ideally suited for all air movement applications.

Paint finish

Motors are painted with a high quality enamel finish. The standard colour is pastel blue (RAL5024), with other colours available on request.

CMG Motors / Cat HLA 07-04 (1st Edition)

MEPS compliance (Eff 1)

HLA motor efficiency levels comply to the Minimum Efficiency Requirements as per AS/NZS 1359.5:2006 (equivalent to European standard Eff 1).

Bearings

Bearings fitted are a deep groove ball type with double seals and are the same size for both ends.

Motor frame	Bearing Size
80	6204-2RS
90S/L	6205-2RS
100L	6206-2RS
112M	6206-2RS
132S/M	6208-2RS
160M/L	6309-2RS

Terminal box

The terminal box of the HLA series is separate from the body of the motor allowing it to be rotated providing ease of connection to supply.

Internal connections, voltages and VF drive selection

Standard terminal connections for motors 3kW and below is 230V Delta / 400V Star. These motors are suitable for operation with 230V three phase Variable Frequency Drives or 400V DOL starting.

Standard terminal connections for motors 4kW and above is 400V Delta / 690V Star. These motors are suitable for operation with 400V three phase Variable Frequency Drives, 400V Star/Delta or 400V DOL starting.

Product code specification

When placing an order the motor product code should be specified. The product code of the motor is composed in accordance with the following example:

M	3	2	0	0	1	5	0	3	H	L	A	
1	2	3	4-8					9	10-12			13

Position 1

M = metric frame size

Position 2

Phase

3 = Three phase

A = 2 speed fan duty single winding

B = 2 speed fan duty separate windings

Position 3

Number of poles

2 = 2 poles

4 = 4 poles

6 = 6 poles

8 = 8 poles

E = 2/4 poles

J = 4/6 poles

K = 4/8 poles

N = 6/8 poles

P = 6/12 poles

S = 8/16 poles

Positions 4 to 8

Rated power output
(kW x 100)

(refers to kW at high speed for 2 speed motors)

Position 9

Mounting arrangements

3 = B3

4 = B3/B5 **5** = B5

6 = B3/B14A **7** = B14A

8 = B3/B14B **9** = B14B

0 = Body mount

Positions 10 to 12

Series

HLA = HLA series

Position 13

Variation suffix

Blank = standard

F = flying leads

H = H class insulation

P = pad mount (fitted pads)

R = airstream rated

Performance data

HLA series, three phase, 380-415V 50Hz

IP55, F class insulation , B class temperature rise

kW	Motor frame	Speed [r/min]	400V 50Hz						380V 50Hz			415V 50Hz		Weight of foot mount motor [kg]		
			Efficiency at % full load		Power factor at % full load		Current		Torque			Current	Current		Moment of inertia $J=\frac{1}{4}GD^2$ [kg·m ²]	
			100 [%]	75 [%]	100 [%]	75 [%]	Full load I_N [A]	Locked rotor I_L/I_N	Full load T_N [Nm]	Locked rotor T_L/T_N	Break down T_B/T_N	Full load I_N [A]	Full load I_N [A]			
3000 r/min = 2 poles																
0.75	80A - 19	2850	83.4	84.2	0.86	0.81	1.50	7.0	2.5	3.1	3.4	1.57	1.47	0.00085	12	
1.1	80B - 19	2835	84.4	85.9	0.87	0.83	2.2	7.3	3.7	3.0	3.3	2.3	2.1	0.00099	13	
1.5	90S - 24	2860	86.4	87.0	0.86	0.81	2.9	8.4	5.0	3.9	4.0	3.0	2.9	0.0014	15	
2.2	90L - 24	2860	86.5	87.3	0.85	0.80	4.3	8.7	7.4	4.1	4.2	4.4	4.2	0.0016	16	
3	100L - 28	2890	86.7	87.0	0.87	0.82	5.7	9.0	9.9	3.0	3.4	6.0	5.5	0.0035	27	
4	112M - 28	2915	89.6	90.1	0.90	0.86	7.1	9.2	13.1	3.0	3.6	7.4	7.0	0.0062	33	
5.5	132SA - 38	2925	90.2	90.5	0.89	0.85	9.9	8.0	18.0	2.3	3.2	10.3	9.7	0.013	45	
7.5	132SB - 38	2920	90.6	91.1	0.89	0.87	13.3	7.9	24.5	2.3	2.9	13.9	13.0	0.015	50	
11	160MA - 42	2950	92.0	91.9	0.88	0.83	19.5	8.0	35.6	2.3	3.2	20.3	19.1	0.045	73	
15	160MB - 42	2945	92.4	92.2	0.88	0.86	26.4	7.8	48.6	2.1	2.9	27.4	25.9	0.051	82	
18.5	160L - 42	2935	92.2	92.3	0.89	0.86	32.5	7.6	60.2	2.1	2.7	34.0	31.7	0.057	84	
1500 r/min = 4 poles																
0.75	80B - 19	1410	82.2	82.5	0.72	0.63	1.85	7.5	5.1	2.3	2.6	1.90	1.80	0.0023	14	
1.1	90S - 24	1425	84.0	84.6	0.74	0.66	2.6	6.2	7.4	2.9	3.0	2.6	2.5	0.0026	17	
1.5	90L - 24	1430	86.2	86.9	0.75	0.68	3.4	7.0	10.0	3.1	3.4	3.4	3.3	0.0029	18	
2.2	100LA - 28	1455	86.5	86.1	0.78	0.71	4.7	8.3	14.4	3.1	3.5	4.8	4.7	0.0058	24	
3	100LB - 28	1455	87.4	87.4	0.79	0.74	6.2	8.0	19.7	2.7	3.0	6.5	6.0	0.0071	29	
4	112M - 28	1455	88.9	89.2	0.79	0.74	8.2	7.3	26.3	2.6	3.1	8.4	8.1	0.011	31	
5.5	132S - 38	1460	90.2	90.6	0.83	0.80	10.6	7.1	36.0	2.0	2.7	11.0	10.4	0.023	53	
7.5	132M - 38	1455	90.5	91.0	0.84	0.80	14.3	7.4	49.2	2.3	2.8	14.9	14.0	0.032	63	
11	160M - 42	1470	91.0	90.9	0.84	0.79	20.7	7.4	71.5	2.1	3.2	21.3	20.6	0.079	80	
15	160L - 42	1465	91.8	91.9	0.85	0.81	27.6	7.5	97.8	2.0	3.1	28.4	27.2	0.096	94	

For smaller outputs please refer to the CMG MT series catalogue.

This data is provided for guidance only. For confirmation contact CMG for a test report.

Performance data

HLA series, three phase 380-415V 50Hz

IP55, F class insulation , B class temperature rise

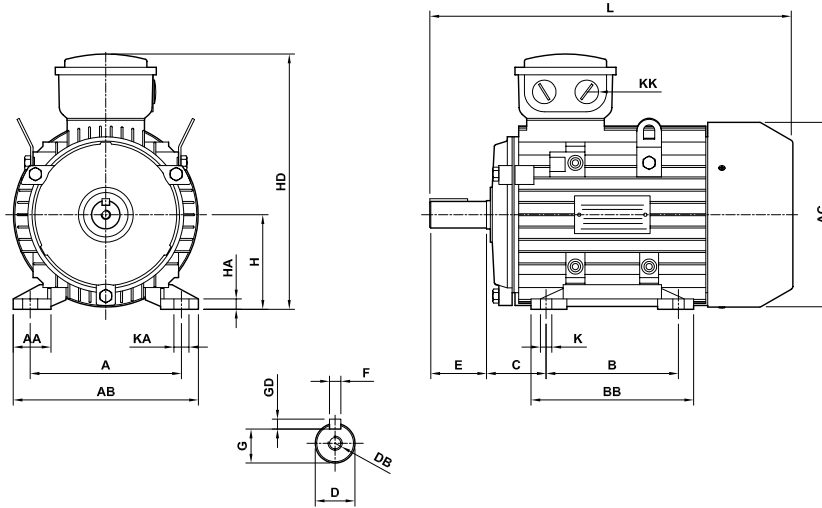
kW	Motor frame	Speed [r/min]	400V 50Hz						380V 50Hz			415V 50Hz		Weight of foot mount motor [kg]		
			Efficiency		Power factor		Current		Torque			Current	Current			
			at % full load		at % full load		Full load	Locked rotor	Full load	Locked rotor	Break down	Full load	Full load		Moment of inertia J=1/4GD ² [kg·m ²]	
			100	75	100	75	I _N [A]	I _L /I _N	T _N [Nm]	T _L /T _N	T _B /T _N	I _N [A]	I _N [A]			
1000 r/min = 6 poles																
0.75	90S - 24	940	77.7	77.7	0.70	0.60	2.0	5.5	7.6	2.2	2.7	2.0	1.80	0.0034	17	
1.1	90L - 24	950	79.9	79.9	0.71	0.64	2.8	6.2	11.1	2.3	2.7	2.8	2.6	0.0041	18	
1.5	100L - 28	955	81.9	82.3	0.74	0.66	3.6	6.0	15.0	2.4	2.9	3.7	3.6	0.0079	26	
2.2	112M - 28	960	84.9	85.6	0.72	0.66	5.2	5.7	21.9	2.1	2.6	5.3	5.2	0.0158	32	
3	132S - 38	965	86.3	87.1	0.76	0.70	6.6	5.9	29.7	1.8	2.2	6.8	6.5	0.035	50	
4	132MA - 38	965	87.2	88.1	0.75	0.69	8.8	6.4	39.6	2.0	2.7	9.0	8.8	0.041	51	
5.5	132MB - 38	965	87.9	88.6	0.77	0.71	11.8	6.6	54.4	2.0	2.7	12.2	11.7	0.051	62	
7.5	160M - 42	975	89.2	89.5	0.79	0.76	15.4	6.4	73.5	2.1	2.9	15.7	15.3	0.098	86	
11	160L - 42	975	89.9	89.7	0.78	0.71	22.7	6.9	108	2.3	3.3	23.0	22.8	0.131	94	
750 r/min = 8 poles																
0.75	100LA - 28	715	77.2	76.4	0.66	0.57	2.1	5.7	10.0	2.2	2.3	2.2	2.0	0.011	26	
1.1	100LB - 28	715	78.6	78.8	0.69	0.61	2.9	5.6	14.7	2.1	2.2	3.0	3.0	0.013	29	
1.5	112M - 28	710	80.8	80.5	0.63	0.53	4.2	4.7	20.2	2.4	2.7	4.3	4.1	0.026	30	
2.2	132S - 38	720	84.9	84.9	0.73	0.64	5.1	5.6	29.2	2.2	2.9	5.3	5.1	0.035	50	
3	132M - 38	715	85.6	85.5	0.73	0.65	7.0	5.8	40.1	2.7	3.1	7.1	6.9	0.045	63	
4	160MA - 42	720	86.0	85.8	0.72	0.65	9.4	5.7	53.1	2.0	2.9	9.5	9.4	0.078	72	
5.5	160MB - 42	720	86.6	87.3	0.72	0.63	12.8	6.0	73.0	2.4	3.0	13.0	13.0	0.095	82	
7.5	160L - 42	720	87.6	88.2	0.75	0.69	16.4	6.3	99.5	2.5	2.9	16.7	16.1	0.135	94	

For smaller outputs please refer to the CMG MT series catalogue.

This data is provided for guidance only. For confirmation contact CMG for a test report.

Dimensional drawings

Foot mount B3 (IM1001)

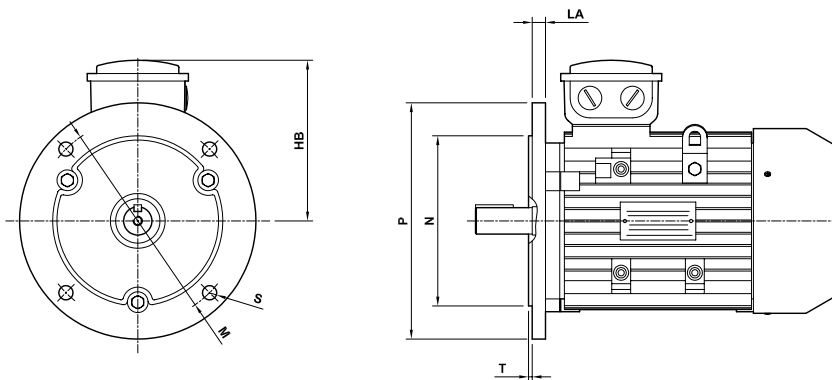


Foot mount B3 (IM1001)

Motor frame	A	AA	AB	AC	B	BB	C	D	DB	E	F	GD	G	H	HA	HD	K	KA	KK	L
80 - 19	125	35	157	164	100	125	50	19	M6	40	6	6	15.5	80	9	217	10	14	1xM20	289
90S - 24	140	37	173	180	100	125	56	24	M8	50	8	7	20	90	10	236	10	14	2xM20	321
90L - 24	140	37	173	180	125	150	56	24	M8	50	8	7	20	90	10	236	10	14	2xM20	347
100L - 28	160	40	197	203	140	172	63	28	M10	60	8	7	24	100	12	264	12	16	2xM20	400
112M - 28	190	41	227	221	140	180	70	28	M10	60	8	7	24	112	12	290	12	16	2xM25	448
132S - 38	216	51	262	260	140	186	89	38	M12	80	10	8	33	132	15	327	12	16	2xM25	478
132M - 38	216	51	262	260	178	224	89	38	M12	80	10	8	33	132	15	327	12	16	2xM25	518
160M - 42	254	55	304	314	210	260	108	42	M16	110	12	8	37	160	18	420	15	18	2xM32	605
160L - 42	254	55	304	314	254	304	108	42	M16	110	12	8	37	160	18	420	15	18	2xM32	650

Dimensional drawings

Large flange mount B5 (IM3001)

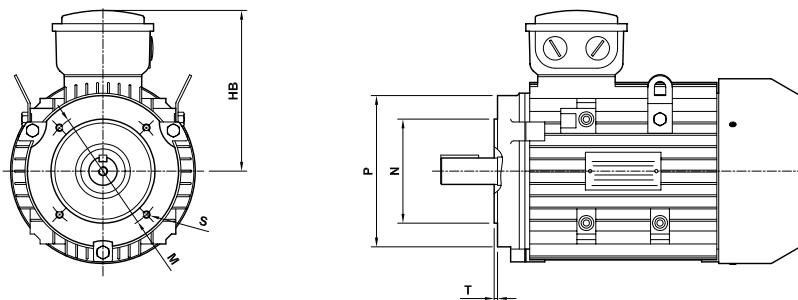


Flange mount B5 (IM3001)

Motor frame	HB	LA	M	N	P	S	T
80 -19	137	12	165	130	200	12	3.5
90S -24	146	12	165	130	200	12	3.5
90L -24	146	12	165	130	200	12	3.5
100L -28	164	14	215	180	250	15	4.0
112M -28	178	14	215	180	250	15	4.0
132S -38	195	14	265	230	300	15	4.0
132M -38	195	14	265	230	300	15	4.0
160M -42	260	15	300	250	350	19	5.0
160L -42	260	15	300	250	350	19	5.0

For further dimensional data, see foot mount data (page 6).

Small flange (face) B14 (IM3601)



Face mount B14A (IM3601)

Motor frame	HB	M	N	P	S	T
80 -19	137	100	80	120	M6	3.0
90S -24	146	115	95	140	M8	3.0
90L -24	146	115	95	140	M8	3.0
100L -28	164	130	110	160	M8	3.5
112M -28	178	130	110	160	M8	3.5
132S -38	195	165	130	200	M10	3.5
132M -38	195	165	130	200	M10	3.5
160M -42	260	215	180	250	M12	4.0
160L -42	260	215	180	250	M12	4.0

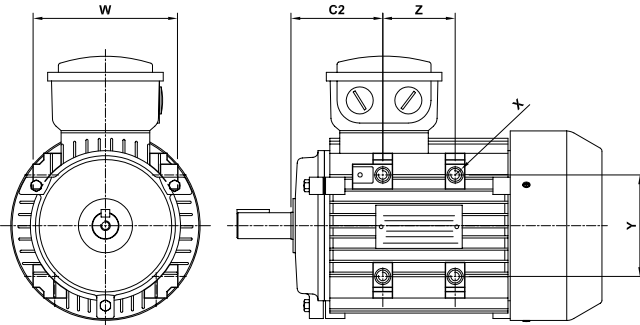
For further dimensional data, see foot mount data (page 6).

Face mount B14B (IM3601)

Motor frame	HB	M	N	P	S	T
80 -19	137	130	110	160	M8	3.5
90S -24	146	130	110	160	M8	3.5
90L -24	146	130	110	160	M8	3.5
100L -28	164	165	130	200	M10	3.5
112M -28	178	165	130	200	M10	3.5
132S -38	195	215	180	250	M12	4.0
132M -38	195	215	180	250	M12	4.0
160M -42	available on request					
160L -42	available on request					

Dimensional drawings

Multi-mount option - HLA

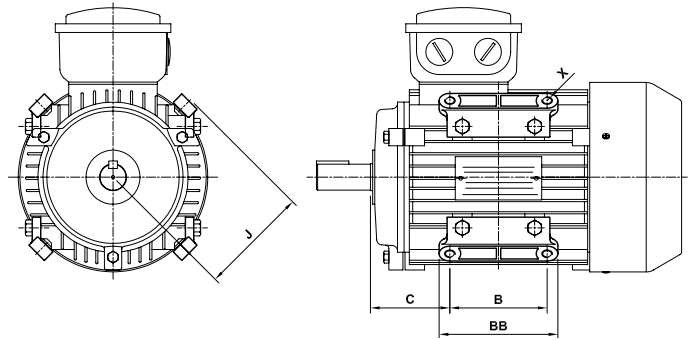


Multi-mount B0

Motor frame	C2	W	X ¹⁾	Y	Z
80 - 19	79	126	M8	96	42
90S - 24	85	143	M8	102	42
90L - 24	85	143	M8	102	67
100L - 28	94	164	M8	120	78
112M - 28	104	170	M10	120	72
132S - 38	123	206	M10	154	72
132M - 38	123	206	M10	154	110
160M - 42	153	250	M12	190	120
160L - 42	153	250	M12	190	164

¹⁾ 16 multi-mount mounting pads, 12 tapped or have a provision for tapping. The standard multi-mount offers mounting holes that are vertical or horizontal only.

PAD mount - HLAP



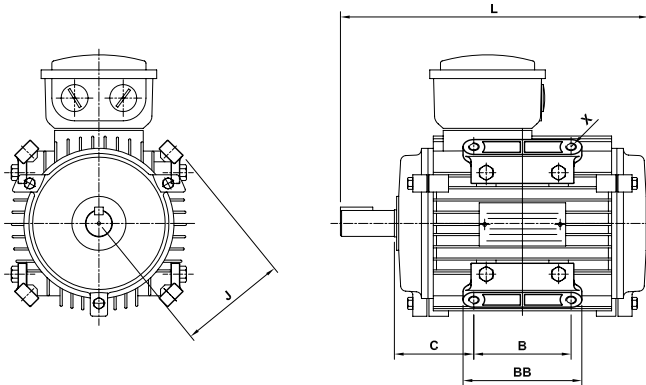
PAD mount B0

Motor frame	B	BB	C	J	X
80 - 19	90	110	55	102	M12
90S - 24	90	110	61	106	M12
90L - 24	90	110	73.5	106	M12
100L - 28	100	120	83	121	M12
112M - 28	100	120	90	125	M12
132S - 38	102	132	108	158	M16
132M - 38	140	170	108	158	M16
160M - 42	available on request				
160L - 42	available on request				

Pad mount motors are supplied by fitting 4 pads to the multi-mount motors. This option enables the mounting brackets to be fitted in a radial position relative to the motor shaft.

Dimensional drawings

Airstream rated PAD mount - HLARP



Airstream rated PAD mount B0

Motor frame	B	BB	C	J	L	X
80 - 19	90	110	55	102	240	M12
90S - 24	90	110	61	106	277	M12
90L - 24	90	110	73.5	106	302	M12
100L - 28	100	120	83	121	348	M12
112M - 28	100	120	90	125	382	M12
132S - 38	102	132	108	158	398	M16
132M - 38	140	170	108	158	435	M16
160M - 42	available on request					
160L - 42	available on request					

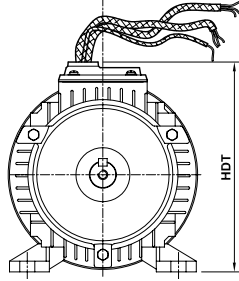
Pad mount motors are supplied by fitting 4 pads to the multi-mount motors. This option enables the mounting brackets to be fitted in a radial position relative to the motor shaft.

Modifications and variations

Terminal box

HLA motors come standard with a terminal box. Alternatively the terminal box can be replaced with a single conduit entry blanking plate and extended leads, including an earth.

Motor frame	Conduit size	HDT
80	M20 x 1.5	192
90S/L	M20 x 1.5	203
100L	M20 x 1.5	234
112M	M25 x 1.5	244
132S/M	M25 x 1.5	291
160M/L	available on request	



For either terminal box or blanking plate configuration feet can be relocated to provide wiring to the left or right side, or completely removed to enable mounting from the multi-mount pads.

Bearings

CMG can address applications where bearings need special consideration, including:

- Alternative bearing types
- Low/high temperature bearing grease

Shafts

Standard HLA motors come with a single output shaft to standard dimensions. The following alternatives are available:

- Double shaft extension
- Special shaft extension
- Stainless steel shaft material

Endshields

Standard HLA endshields are all aluminium. For frames 90 to 160 they are fitted with steel inserts for the bearings. Cast iron or special endshields for customer applications can be manufactured to specification.

Slide rails

CMG stock slide rails to suit frame sizes from 80 to 160L. Rail sets are manufactured from cast iron and provided with mounting bolts and nuts between motor and rail.

Environmental considerations

Where environmental factors need special consideration CMG can provide the following modifications:

- Winding temperature monitors and thermistors
- Anti-condensation heaters
- Separately powered cooling blowers
- Tropic proofing
- Special paint finish
- Higher IP ratings: IP56, IP65, and IP66
- High ambient temperature motors – HLAH with H class insulation

Special performance

CMG is able to provide HLA motors with special windings. These include:

- 10,12 and 16 pole single speed windings
- Two, three and four speed windings
- Windings for alternative operating voltages and frequencies
- Windings designed for increased outputs and short time ratings

Need an extra product to complete your project?

Truly a one stop destination, at CMG we offer a comprehensive range of products, including associated accessories, for a wide range of industries.

Ask us about our speciality products:

- ▶ Electric Motors
- ▶ Gear Motors
- ▶ AC Drives
- ▶ Softstarters

PLUS we stock and supply many associated products.

Contact us NOW for a product catalogue.

Electric Motors

- HGA series** Enhanced performance cast iron units MEPS2 (Eff 1) compliant
- SGA series** Enhanced performance cast iron units
- HLA series** Cast aluminium multi-mount units MEPS2 (Eff 1) compliant
- SLA series** Cast aluminium multi-mount units
- PPA series** High specification cast iron units
- PPD series** Zone 1 Exd cast iron units
- MT series** Cast aluminium single & three phase units
- CT series** Air movement, pumping & general purpose application motors
- CW series** Australian made, special application & general purpose motors

AC Drives & Softstarters

- Vacon NX** Vacon frequency converters
- Lovato ADX** Softstarters with torque control

Gear Motors

- Nordbloc-HGA** Euro dimension inline units
- Nordunicase-HGA** Heavy duty inline and flat helical units
- Nordbevel-HGA** Heavy duty helical bevel units
- Nordworm-HGA** All cast iron motor & wormbox units
- FRT-MTT/HLA** All aluminium universal mount wormbox units
- FRS-HGA** All cast iron motor & wormbox units
- FRS-MTT/HLA** All aluminium motor & wormbox units
- FRD-MTT/HLA** All aluminium Euro dimension inline units
- C&H SLA** High ratio inline multi-stage spur units
- Cycloid 600** Compact High Efficiency Cycloidal speed reducers
- Geardrive** C-frame sub-fractional horsepower units
- SMR®** Helical shaft mounted reducers
- CRT-MTT/HLA** All aluminium universal mount wormbox units

Other

- Corporate Brochure & Product Selection Guide

Please note: not all products are available worldwide.



HEAD OFFICE

19 Corporate Ave
PO Box 2340
Rowville VIC 3178 AUSTRALIA
info@cmggroup.com.au
Tel: +61 (0)3 9237 4000
Fax: +61 (0)3 9237 4010

AUSTRALIA

Sales : 1300 888 853
Support : 1800 676 722
www.cmggroup.com.au
CMG Pty Ltd
ABN 99 005 118 114

VICTORIA

19 Corporate Ave
Rowville VIC 3178
Tel: +61 (0)3 9237 4040
Fax: +61 (0)3 9237 4050

NEW SOUTH WALES

8/26 Powers Road
Seven Hills NSW 2147
Tel: +61 (0)2 9674 1555
Fax: +61 (0)2 9674 4652

NORTH NEW SOUTH WALES

13B Old Punt Road
Tomago NSW 2322
Tel: +61 (0)2 4964 9144
Fax: +61 (0)2 4964 8537

QUEENSLAND

1/6-8 Radium Street
Crestmead QLD 4132
Tel: +61 (0)7 3803 2033
Fax: +61 (0)7 3803 2683

NORTH QUEENSLAND

Cnr. John Vella Drive & Connors Rd
Paget, Mackay QLD 4740
Tel: +61 (0)7 4952 6244
Fax: +61 (0)7 4952 6277

NORTHERN TERRITORY

24 Benison Road
Winnellie NT 0820
Tel: +61 (0)8 8947 2633
Fax: +61 (0)8 8947 1499

WESTERN AUSTRALIA

21 Colin Jamieson Drive
Welshpool WA 6106
Tel: +61 (0)8 6253 3700
Fax: +61 (0)8 6253 3710

SOUTH AUSTRALIA

2/24 Richard Street
Hindmarsh SA 5007
Tel: +61 (0)8 8340 8333
Fax: +61 (0)8 8340 8800

TASMANIA

112 Tarleton Street
East Devonport TAS 7310
Tel: +61 (0)3 6427 9911
Fax: +61 (0)3 6427 9922

ASIA PACIFIC

www.cmggroup.com.sg

SINGAPORE

CMG Electric Motors (Asia Pacific) Pte Ltd
Registration No. 200414611G
69 Tech Park Crescent
Singapore 638073
Tel: +65 6863 3473
Fax: +65 6863 3476

CHINA

www.cmggroup.co.cn

SHANGHAI

CMG Electric Motors Trading (Shanghai) Co Ltd
Registration No. 040714
775 Siping Road, 1st building Room 1915
Hong Kou District
Shanghai 200092
Tel: +86 (0)21 6508 8785
Fax: +86 (0)21 6508 8873

EUROPE

www.cmggroup.co.uk

UNITED KINGDOM

CMG Electric Motors (UK) Ltd
Registration No. 0459 5019
Unit A Stafford Park 2
Telford
Shropshire TF3 3AR UK
Tel: +44 (0)1952 299 606
Fax: +44 (0)1952 299 667

MIDDLE EAST

www.cmggroup.co.il

ISRAEL

CMG Electric Motors (Israel) Ltd
Company No. 513713107
9 Bareket St, Zone 23
North Industrial Park
Caesarea 38900
Tel: +972 (0)4 627 0777
Fax: +972 (0)4 627 0779

NEW ZEALAND

Sales : 0800 676 722
www.cmggroup.co.nz

CMG Electric Motors (NZ) Ltd
NZCN : 567 351

AUCKLAND

315A Rosebank Road
Rosebank, Avondale
Auckland
Tel: +64 (0)9 820 3550
Fax: +64 (0)9 828 9288

CHRISTCHURCH

Cnr Lunns & Annex Road
Middleton
Christchurch
Tel: +64 (0)3 348 3740
Fax: +64 (0)3 348 3760

ROTORUA

51 Pururu Street
Rotorua
Tel: +64 (0)7 347 8624
Fax: +64 (0)7 347 8629

SOUTH AFRICA

www.cmggroup.co.za

CMG Electric Motors South Africa (Pty) Ltd
Registration No. 2003/001379/07

JOHANNESBURG

268B Fleming Road
Meadowdale
Germiston
Johannesburg 1614
Tel: +27 (0)11 453 1930
Fax: +27 (0)11 453 9560

DURBAN

Unit 4, Constantia Industrial Park
1415 North Coast Road
Redhill
Durban 4051
Tel: +27 (0)31 569 5551
Fax: +27 (0)31 569 5549

MIDDELBURG

Unit 6, 2 Rand Street
Industrial Area
Middelburg 1050
Tel: +27 (0)13 246 1902
Fax: +27 (0)13 246 1205

CAPE TOWN

Unit 3, 52 Junction Street
Tygerberg Industrial Park
Parow Industria
Cape Town 7499
Tel: +27 (0)21 951 2901
Fax: +27 (0)21 951 2910

CMG products are sold and recommended by :